

Amazing 韩国  
KOREA 韩国

8D6N

# 釜山 / 大邱 / E-WORLD / 首尔

BUSAN / DAEGU / E-WORLD / SEOUL

Tour Code: KFJ-2

 **Golden**<sup>®</sup>  
Destinations



Korea  
韩国



Haeundae Blue Line Park  
Beach Train Blue Line Park  
海云台海边列车



Wearing Hanbok  
visit Gyeongbok Palace  
穿着韩服游景福宫



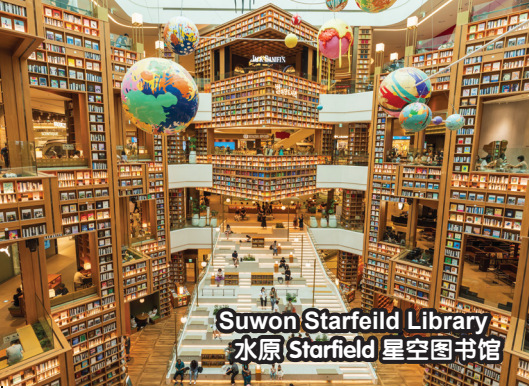
Gamcheon Culture Village  
甘川文化村



Alpaca 羊驼

E-World Park  
E-World 乐园

行程次序，以当地旅社安排为准。  
Sequences of Itinerary are subject  
to local arrangement.



Suwon Starfeild Library  
水原Starfield 星空图书馆



Namsangol Hanok Village  
南山谷韩屋村



Yonggung Temple  
海东龙宫寺



## SCHEDULE

### D1 DEPARTURE ✈️ BUSAN

### D2 ARRIVAL BUSAN (MOB/L/D)

- ☑️ Huinnyeoul Culture Village
- ☑️ Songdo Skywalk
- ☑️ Enjoy The Ancient Taste
- ☑️ Ajuma Red Bean Ice
- ☑️ Gwangang Beachside Coffee Street

### D3 BUSAN (B/L/D)

- ☑️ Gamcheon Culture Village
- ☑️ Haeundae Blue Line Park Beach Train
- ☑️ Yonggung Temple
- ☑️ Lottle Outlet

### D4 BUSAN 🚗 DAEGU (B/L/D)

- ☑️ E-WORLD Park  
(Cable car + 83 Tower + passport ticket with unlimited ride)
- ☑️ Dongseong-ro Shopping Street

### D5 DAEGU 🚗 SUWON (B/L/D)

- ☑️ Starbucks Daegu Jongro Old House  
(One Americano for Each Person)
- ☑️ Suwon Starfeild Library
- ☑️ Suwon Fried Chicken Alley

### D6 SUWON 🚗 SEOUL (B/L/D)

- ☑️ Wearing Hanbok  
visit Gyeongbok Palace  
(Closed on Tuesday, Replace by Deoksu Palace)
- ☑️ Seaweed Museum (DIY Kimchi)
- ☑️ Namsangol Hanok Village

### D7 SEOUL (B/L/-)

- ☑️ Myeongdong + Duty Free

### D8 SEOUL 🚗 INCHEON ✈️ DEPARTURE (B/MOB)

- ☑️ Local Product Shop

#### SHOPPING STOP

- ✓ Cosmetics Shop
- ✓ Liver Supplement Shop
- ✓ Ginseng Shop

## TOURIST ATTRACTIONS:

### BUSAN

- ◆ **Gamcheon Culture Village** - "Korea's Santorini." "Korea's Machu Picchu." "Lego Village." These are the many nicknames the Busan neighborhood of Gamcheon 2-dong Village has earned over the years.
- ◆ **Haeundae Blue Line Park Beach Train** - Take a train with a retro shape, and the direction of the chairs is all facing the seaside, and you can enjoy the coastline of East Busan along the way.
- ◆ **Songdo Skywalk** - Located on the eastern side of Songdo Beach, connecting to Geobukseom Island. The skywalk features sections with a clear glass floor that creates the feeling of walking on top of the ocean. The amazing panoramic view of the surrounding area has made the skywalk a popular destination. First opened in 2015, the 365-meter-long skywalk continues to attract tourists to Songdo Beach.

### DAEGU

- ◆ **E-World Park** - Daegu's most famous amusement park, opened in 1995. The park not only has popular rides such as roller coasters and pirate ships, but also various facilities suitable for family travel, such as carousels and zoos. In addition, there are many cafes and restaurants in the park to provide rest areas.
- ◆ **Dongseong-ro Shopping Street** - Daegu's fashion street, here are densely packed with various fashion stores, from personalized T-shirts to a variety of small handicrafts, all of which are good quality and cheap.
- ◆ **Starbucks Daegu Jongro Old House** - Starbucks Daegu Jongro Old House store conserved the beautiful architectural style of a hanok house built in 1919 and reinterpreted with the modern touch. The store is composed of two hanok buildings and a garden. There is a separate building for restrooms. Here, you can enjoy the scenery of the four seasons and the history from past to present.

### SUWON

- ◆ **Suwon Starfeild Library** - Located on the 4-7F of the shopping mall, it is known as the 2.0 version of the Starfield Library. It can be said to be the most popular new attraction in Korea when it opens in January 2024. Has a beautiful library filled with so much fun architecture.

### SEOUL

- ◆ **Gyeongbok Palace** - Built in 1395, Gyeongbokgung Palace is also commonly referred to as the "Northern Palace" because it is the furthest north when compared to the neighboring palaces. Gyeongbokgung Palace is arguably the most beautiful and remains the grandest of all five palaces.



✓ 6 Breakfast / 6 Lunch / 5 Dinner

#### Special Cuisine:

- ★ Korean Seafood Pot
- ★ Korean Fried Rice Chicken + Beer
- ★ Korea Jokbal (Pork Trotters)
- ★ Korean BBQ
- ★ Korean Pork and Potato Stew
- ★ Ginseng Chicken
- ★ International & Korean Buffet
- ★ Bibimbap



#### HOTEL OR SIMILAR (6 NIGHTS)

- ✓ Busan GNB Hotel or Kwangsu Hotel or similar class x2 Nights
- ✓ Interburgo Exco or Daegu Grand Hotel or similar x1 Night
- ✓ Prumir or Ansan Square Hotel or Yongin Hanwha or similar x1 Night
- ✓ Mercure Seoul Magok or Sollago Myeongdong Hotel or Sotetsu Hotels The Splaisir Seoul Myeongdong or similar class x2 Nights

**Disclaimer:** Golden Destinations reserved the right to alter the sequence or change, amend or alter the itinerary if necessary, with or without prior notice.  
**Remark:** There will be no refund or replacement if the tour logistic affected by the above issue. All pictures are for illustration purpose only.



Dongseong-ro Shopping Street  
大邱东城路



Songdo Skywalk  
松岛天空步道



Starbucks Daegu Jongro Old House  
大邱韩屋星巴克

## 精简行程

第一天 启程 ✈️ 釜山

第二天 抵达釜山 (机上用餐/午/晚)

- ☑ 白浅滩文化村
- ☑ 松岛SKYWALK
- ☑ 享用古早味阿婆红豆沙冰
- ☑ 广安里咖啡街

第三天 釜山 (早/午/晚)

- ☑ 甘山文化村
- ☑ Blue Line Park 海云台海边列车
- ☑ 海东龙宫寺
- ☑ 乐天名牌购物中心

第四天 釜山 🚌 大邱 (早/午/晚)

- ☑ E-World 乐园 (缆车+83塔+乐园自由券)
- ☑ 大邱东城路

第五天 大邱 🚌 水原 (早/午/晚)

- ☑ 大邱韩屋星巴克 (每人一杯美式咖啡)
- ☑ 水原Starfield 星空图书馆
- ☑ 水原炸鸡街

第六天 水原 🚌 首尔 (早/午/晚)

- ☑ 穿着韩服游景福宫 (周二闭馆, 改为参观德寿宫)
- ☑ 紫菜博物馆 (DIY泡菜)
- ☑ 南山谷韩屋村

第七天 首尔 (早/午/-)

- ☑ 明洞 & 免税店

第八天 首尔 🚌 仁川 ✈️ 回程 (早/机上用餐)

- ☑ 土产店

### 购物店

- ✓ 化妆品总汇
- ✓ 人参专卖店
- ✓ 健肝宝专卖店

## 观光景点:

### 釜山

- ◆ **甘川洞文化村** - 像童话小村般的缤纷色彩、艺术风情,更有着亲切可人的居民们,被CNN报导称为”亚洲最艺术的村落”,被誉为“釜山的圣托里尼”,成为知名的文化景点。
- ◆ **海云台Blue Line Park海边列车** - 乘坐着造型复古共的列车,加上椅子方向全部面向海边的方向,沿途可欣赏东釜山的海岸绝境。
- ◆ **松岛SKYWALK** - 连接陆地与位于松岛海水浴场东边的龟岛,部分区间特别设置了透明强化玻璃,给人仿佛走在大海上的刺激感。漫步在步道上,还能将有众多渔船停泊的松岛沿岸、松岛海水浴场、松岛海上缆车尽收眼底。美丽的景色也使这里渐渐成为釜山海水浴场的新地标。

### 大邱

- ◆ **E-World 乐园** - 探索 E-World 的完美和谐激动人心的游乐设施、展览和表演大厅、照明展示以及花园和瀑布等人造景观。乘坐 Sky Way 缆车,欣赏美丽的城市景观。继续沿着风景如画的路线,不要错过攀登 E-World 塔 83 层的机会,体验 83 塔 - 大邱令人难以置信的鸟瞰图。与您的朋友和家人一起享受充满乐趣的一天,体验大邱提供的一切。
- ◆ **大邱东城路** - 大邱的时尚之街,在这里密密麻麻的挤满了各种时尚店铺,从个性十足的T恤,到各式各样的小型手工艺品,应有尽有,且物美价廉。
- ◆ **大邱韩屋星巴克** - 星巴克大邱钟路古宅店是巧妙融合新旧的特别分店,外观保存了1919年所建的旧时韩屋建筑样式,内部则以现代装潢重新诠释,呈现出古色古香又新潮的独特氛围。大邱钟路古宅店共有两栋韩屋与庭园,以及另建的一栋洗手间建

### 水原

- ◆ **水原Starfield星空图书馆** - 位商场4-7F,星空图书馆2.0版本美誉,可说是2024年一月开幕是韩国最人气的新景点。韩国创作打卡地标及注重细节精致,常让我惊艳不已,电梯上来就会被几十米高如积木推叠的书架城墙给震慑,正中心上空悬挂着几颗大型行星群,巨大的网状玻璃穹顶,让自然光透进可以直接看到天空。

### 首尔

- ◆ **景福宫** - 是李朝 (1392~1910年) 时期首尔的五大宫之一,也是李氏王朝的正宫,具有 500 年历史。景福宫是李朝的始祖——太祖李成桂 (1392~1398年在位) 于1395年将原来 高丽 的首都迁移时建造的新王朝的宫殿。

✓ 6早餐/6午餐/5晚餐



风味餐:

- ★ 海鲜锅
- ★ 韩式烧烤
- ★ 国际&韩式自助餐
- ★ 韩式炸鸡+啤酒
- ★ 马铃薯猪骨汤
- ★ 韩式猪蹄
- ★ 人参鸡
- ★ 韩式拌饭



酒店住宿 (6晚)

- ✓ 釜山GNB酒店或光洙酒店或同级 x2晚
- ✓ 因特布尔格埃克斯克酒店或大邱大飯店或同级 x1晚
- ✓ 普米尔飯店或安山广场酒店或龙仁韩华度假村或同级 x1晚
- ✓ 首尔Mercure Magok或Sollago Myeongdong或Sotetsu The Splaisir Seoul Myeongdong酒店或同级 x2晚

免责声明: 必要时黄金旅程保留对行程进行适当调整 (调整景点游览顺序) 以确保行程顺利进行,会或否事先通知。

备注: 如果旅游行程受到上述问题的影响,将不予退款或更换。图片仅供参考。

# 旅游质讯 General Information

## • 韩国 SOUTH KOREA •



<b>货币</b> Currency 	SOUTH KOREAN WON - KRW 韩币 - KRW	<b>信用卡</b> Credit Card 	* Credit cards are used widely in South Korea card are mostly widely used. * 许多信用卡在韩国都能通行
<b>货币兑换率</b> Exchange Rate 	KRW 1000 = MYR 3.30 1000 韩币 = 马币 3.30 <small>*Subject to currency of the day* *以当天汇率为准*</small>	<b>拨号代码</b> Dial Code 	SOUTH KOREA : +82 韩国 : +82
<b>电压</b> Voltage 	Voltage - 220 V 电压 - 220伏特	<b>插座</b> Power Socket 	2 Round pins *Please bring a universal electric plug adapter 两个圆脚头插座 * 请自带多功能插座
<b>时差</b> Time Different 	South Korea is 1 hour ahead of Malaysia 韩国标准时差快马来西亚时间1小时	<b>行李托运</b> Luggage Allowance 	Each individual are entitled to check in 1 luggage of not more than 20kg and a hand carry bag not more than 7kg. 每人只限携带一件不超过7公斤的手提行李上机, 以及托运行李不超过20公斤
<b>气候</b> Weather 	<input type="checkbox"/> Spring 春季 03月 - 05月 Mar to May 24°C - 10°C <input type="checkbox"/> Summer 夏季 06月 - 08月 Jun to Aug 30°C - 15°C <input type="checkbox"/> Autumn 秋季 09月 - 11月 Sep to Nov 20°C - 10°C <input type="checkbox"/> Winter 冬季 12月 - 02月 Dec to Feb 7°C - -8°C <small>*Subject to weather of the day* *以当天天气报告为准*</small>		
<b>飞机型号</b> Aircraft Type 	A330                  Boeing 777/748		

Departure Date: 出发日期:	<input type="text"/>	Flight : 航班行程:	<input type="text"/>
Tour Fare: 团费:	<input type="text"/>	Airport Tax & Fuel Surcharge: 机场税及燃油附加费:	<input type="text"/>
Tipping: 小费:	<input type="text"/>	Agent Collection Fee: 旅行社代收费:	<input type="text"/>
Visa: 签证:	<input type="text"/>	Travel Insurance: 旅行保险:	<input type="text"/>
		TOTAL : 总数:	<input type="text"/>



Operated By  
ICE HOLIDAYS SDN BHD  
(230643-X) KPK/LN:2441

GD Partner: