

8D7N

# PREMIUM KOREA

冬季

奢享韩国

SPLENDOR OF WINTER

Busan | Gyeonggi-do | Gangwon-do | Seoul  
釜山 | 京畿道 | 江原道 | 首尔







# By The Signature Tours 带您无限探索 Travel Designer Team 中华魅力风情



Dear Valued Guest,

Korea in winter is the perfect destination for a family getaway. Snow blankets the streets and mountains, creating a peaceful and romantic winter landscape. Whether you're having a snowball fight, building snowmen, or simply strolling through the snowy scenery, every moment is filled with winter's magic and worth cherishing.

Winter is not just about breathtaking views, it also makes family time even more special. Gather around a steaming Korean meal, savoring warm and delicious dishes. Or take a stroll through streets decorated with lights, admiring the unique charm of winter nights and enjoying time together. The shared laughter, the snow-covered landscapes passing by the window, and the quiet beauty of winter all make the journey even more memorable.

Traveling is not just about discovering new places, it's about spending time with loved ones. This winter, take your family on a heartwarming trip and let Korea's snowy landscapes become part of your most treasured memories.

亲爱的旅客，

冬日的韩国，是一家人共度美好时光的理想去处。皑皑白雪覆盖街道与山川，勾勒出一幅静谧而浪漫的画卷。与家人一起打雪仗、堆雪人，或漫步雪中欣赏美景，感受冬日的独特魅力，每一刻都值得珍藏。

冬天不仅带来迷人的风景，也让家庭时光更显温馨。围坐在热气腾腾的韩式美食前，感受舌尖上的温暖；或是在灯光点缀的街头漫步，欣赏冬季限定的夜景，静静享受相伴的美好。一路上的欢声笑语、窗外掠过的雪景，都让这段旅程更加难忘。

旅行不仅是探索新的地方，更是珍惜与家人相伴的时光。这个冬天，带上家人，踏上一场温馨的旅程，让韩国的雪景成为你们共同珍藏的回忆。

Travel Designer :  
旅游设计师 :

He HS



Gamcheon Cultural Village  
甘川文化村



## Map 地图





# Must See Attractions

## 经典地标 深入探索

**Carefree**  
**悠游**

Enjoy relaxation, truly appreciate the world  
享受放松 感慨世界美好

**Capture**  
**收获**

The color & essence of each journey  
旅途中的色彩和精髓

**Cozy**  
**温馨**

Vibes to create joyful moment together  
共创愉悦片刻



### 广安大桥游船

## Gwangandaegyo Bridge Cruise

Cruise along the stunning Busan coastline to experience breathtaking views of Gwangandaegyo Bridge, Marine City, and Gwangalli Beach.

乘坐游船沿着釜山迷人的海岸线航行，欣赏广安大桥、海上城市和广安里海水浴场的壮丽景色。

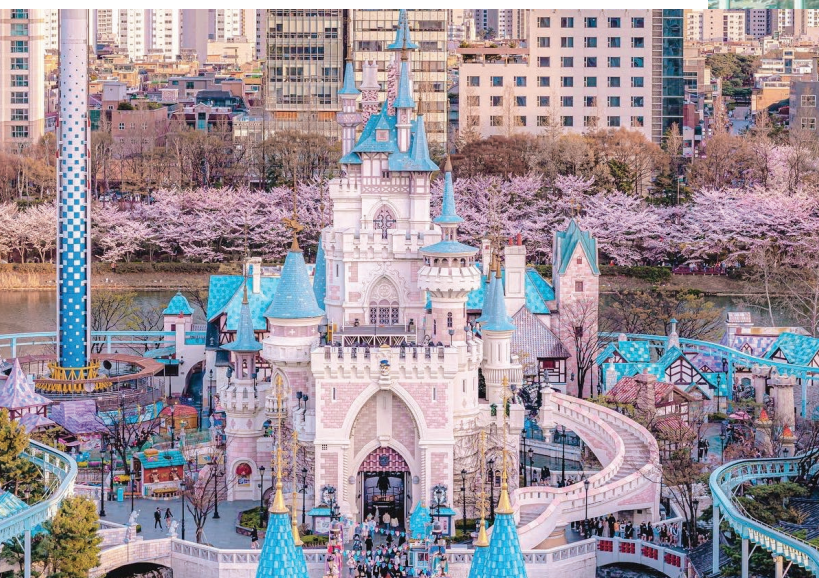
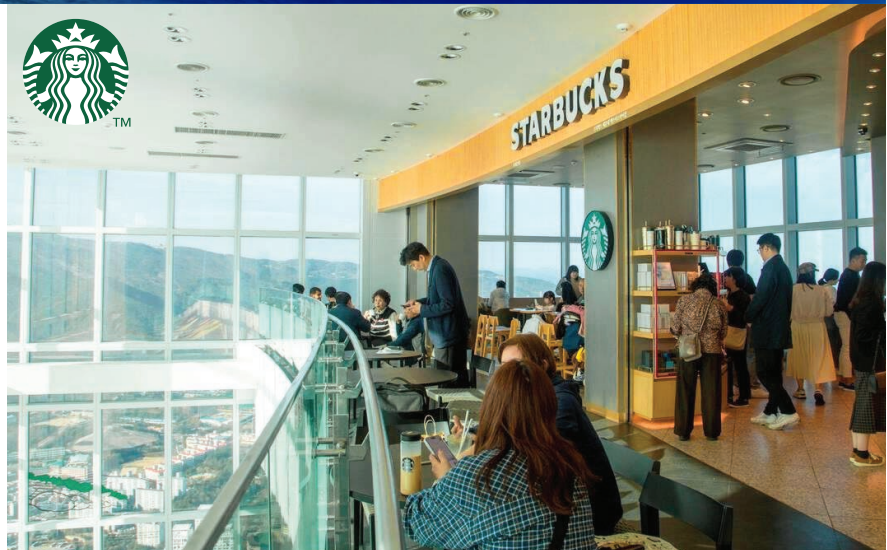
### 釜山 x The Sky @ 星巴克

## Busan x The Sky @ Starbucks

**USD 10**  
**VOUCHER**

Standing on the 100th floor, you can enjoy breathtaking views of Busan, including sights of Gwangandaegyo Bridge and Busan Harbor Bridge. The world's highest Starbucks is located on the 99th floor, where you can savor your coffee while taking in the stunning scenery.

站在100楼高空眺望釜山海景，广安大桥和釜山港大桥等美景尽收眼底。全世界最高楼层的星巴克也位于99楼，在这里以美景佐咖啡，感受高空咖啡的香气与心情！



### 乐天世界

## Lotte World

**EXCLUSIVE MAGIC PASS**  
ENJOY 2 GAMES WITH FAST ACCESS  
尊享魔法通行证，极速体验 2 项

- Gyro Swing 旋转飞椅
- Camelot Carousel 骑士旋转木马
- The Adventures of Sinbad 辛巴达历险记

*If the Magic Pass is suspended due to maintenance, operational adjustments or severe weather, it will be unavailable without prior notice.*  
若因维护、运营调整或恶劣天气导致魔法通行证暂停使用，恕无法提前通知，敬请谅解。

Step into a magical world where dreams and adventure come to life! Embark on an exciting journey at Lotte World and indulge in thrills, joy, and fairy-tale wonders!

步入梦幻与冒险交织的奇妙世界！在乐天世界开启一场惊喜之旅，尽享刺激、欢乐与童话般的美好时光！



## 汗蒸幕 Jimjilbang

When you visit Korea, you must not miss the unique experience of "Jimjilbang", which will completely relax your body, mind, and spirit!

来韩国旅游，有一项体验必须有，那就是韩国独有的“汗蒸幕”，让您的身心灵都得以放松！



## 彩绘涂鸦秀 THE PAINTERS: HERO SHOW



Value up to USD 38  
价值高达  
**USD 38**

A groundbreaking art performance has taken the process of creating a painting and brought it directly onto the stage, presenting it live to the audience. This is not only the first art performance of its kind in Korea but also world's first.

一场颠覆大家想像的彩绘涂鸦表演，将作画过程原封不动地搬上舞台，直接呈现在观众面前。不仅是韩国第一个美术表演，也是世界首例。



**\*Ski suits & ski equipment are included**  
**\*包含租借滑雪服装及滑雪用具**



**\*Goggles & gloves are excluded**  
**\*不包含墨镜及手套**

## 龙平滑雪乐 Yong Pyong Ski Fun



Yong Pyong Ski Resort is Korea's most renowned ski destination and the second world-class ski resort in Asia. Enjoy Yong Pyong Ski field to the fullest by challenging the meticulously designed slopes of varying difficulty levels and experience the thrill and fun of winter sports.

韩国最著名的滑雪胜地，也是亚洲第二个世界级滑雪场。畅享龙平滑雪胜地，尽情挑战精心设计的各种难度的滑雪道，感受冬季运动的刺激与乐趣。







8D 7N

# PREMIUM KOREA: SPLENDOR OF WINTER

BUSAN | GYEONGGI-DO | GANGWON-DO | SEOUL

## DAY 01 KUALA LUMPUR ✈ INCHEON (MOB)

- Transfer to hotel for check-in.

## DAY 02 INCHEON - 440KM - BUSAN (BB/LL/LD)



- **Gamcheon Culture Village:** Walking through the village, the various themes and artistic installations in the alleys, creating an atmosphere reminiscent of a fairy tale kingdom.

- **Busan International Film Festival (BIFF) Square** is a cinephile's haven. The square's ground is embedded with numerous handprints of directors and actors who have participated in the film festival.



- **Signature Food Tour:** Dive into the authentic flavors of the **Nampodong food district** and satisfy your taste buds!

### KUALA LUMPUR ✈ SINGAPORE ✈ BUSAN

- Upon arrival at Busan Airport, visit **Gamcheon Culture Village** and start the day of tour.

## DAY 03 BUSAN (HB/LL/LD)



- **Haeundae Blueline Park (One-way Ticket Included):** Ride on the coastal train, enjoy the breathtaking coastal scenery of East Busan.

- **Cheongsapo Daritdol Observatory:** Standing on the transparent glass floor, you can see the ocean beneath your feet, experiencing the thrilling sensation of walking on the sea.

*\*\* If weather does not permit, attraction will be replaced with visit to the Red and White Lighthouse.*



- **BUSAN X THE SKY** is the largest observation deck in South Korea. From the high-altitude deck, it overlooks the entire Haeundae. It also features the world's highest Starbucks on the top floor!



- Indulge in delightful water and refreshments while enjoying the **Gwangandaegyo Bridge Cruise**, where you can take in the spectacular views of Gwangang Bridge and The Bay 101.



- Korea's unique **Jimjilbang (Sauna)**, offering a variety of spa treatments that will relax your body and mind.

## DAY 04 BUSAN - 110KM - GYEONGGI-DO (HB/LL/LD)



- Ride the **KTJ Train** and journey to Osong Station!
- **Ludensia Park:** A fantasy European-style theme park, the park features various galleries, studios, and cafes.

- **Suwon Hwaseong Fortress:** UNESCO World Heritage Site. This fortress is one of Korea's most important historical treasures and the country's only well-preserved complete walled fortress.



- Check out the new hot spot, **Suwon Starfield Library**. It features a unique design with a four-story high ceiling, showcasing models of rivers and celestial planets.

## DAY 05 GYEONGGI-DO - 170KM - GANGWON-DO (HB/LL/SP)



- Create your own **sweet chocolates and handmade soaps**, adding unique creativity and wonderful memories to your journey!

- After lunch, head to the ski field, enjoy a world-class **skiing experience**.

*(Ski equipment & ski suits are included, goggles and gloves are excluded)*



- **Supper Delights:** Dive into the flavors of Korean fried chicken and frosty beverages, experiencing the nightlife of a K-drama main character!

## DAY 06 GANGWON-DO - 170KM - SEOUL (HB/LD)



- Explore and play in the world's largest indoor theme park **Lotte World!**



- Grab your **VIP seats** to watch the **The Painters Show**, a live painting and cutting-edge media art show featuring action painting.

- **Dongdaemun Market:** Known as the "Birthplace of Fashion," it is a globally renowned fashion shopping paradise.

## DAY 07 SEOUL (HB/LL/LD)



- **Deoksugung Palace:** One of the five main palaces in Seoul, it is also one of the most popular filming sites for Korean dramas.

*\* If closed, replaced by Gyeongbokgung Palace*



- **Shopping Stop:** Ginseng Showroom, Multi Label Cosmetic Shop, Hovenia Dulcis Berry Showroom.

- Visit the trendiest shopping district **Myeongdong Street**

## DAY 08 SEOUL - 60KM - INCHEON ✈ KUALA LUMPUR (BB)

### Meal Codes:

\*MOB=Meals on Board/HB=Hotel Breakfast/LL=Local Lunch/LD=Local Dinner/SP=Supper/BB=Breakfast Box



Exclusive Arrangement

### Disclaimer:

Sequences of itinerary are subject to local arrangement. Itineraries, meals, hotels and transportation are subject to change without prior notice.





Suwon Starfield Library  
水原星空图书馆

8天 7晚

## 冬季奢享韩国

釜山 | 京畿道 | 江原道 | 首尔

### 第01天 吉隆坡 ➔ 仁川

(机上用餐)

- 送往酒店办理入住。

### 第02天 仁川 - 440KM - 釜山

(早餐盒/当地午餐/当地晚餐)



- **甘川文化村**：漫步在甘川文化村中，各式主题及色彩缤纷的小房子，以及巷弄内的各种造型摆设与艺术装置，仿佛走进了童话小王国。

- **BIFF广场**是影迷的天堂。广场的地面装嵌了许多参加过电影节的导演和演员的手印。



- **探店美食之旅**：深入探索**南浦洞美食区**，品尝正宗风味，满足您的味蕾！

### 吉隆坡 ➔ 新加坡 ➔ 釜山

- 抵达釜山机场后，游览**甘川文化村**，开启一天的行程。

### 第03天 釜山

(酒店早餐/当地午餐/当地晚餐)



- **海云台蓝线公园 (含单程车票)**：乘坐海岸列车，沿途欣赏釜山壮丽的海岸风光。

- **青沙浦桥石展望台**：站在透明的玻璃地板上可看到脚下的海洋，感受在海上行走的惊险体验。

\*\* 若遇雨天，将替换红白灯塔



- **BUSAN X THE SKY** 是韩国最大的观景台。从高空可以俯瞰整个海云台，顶层还设有全球最高的星巴克！



- 在**广安大桥游船**上尽情享受茶点，同时欣赏壮观的广安大桥和The Bay 101。



- 韩国独有的**汗蒸幕**，可以享受本同的水疗护理。让你的身体与心灵都得以放松。

### 第04天 釜山 - 釜山 - 五松，清州

(酒店早餐/当地午餐/当地晚餐)

- 110KM - 京畿道



- 乘搭**KTX列车**前往五松站！



- **卢登西亚主题公园**：以幻欧式花园为主题设计，公园内设有各种画廊、工作室和咖啡馆。

- **水原华城**：联合国教科文组织世界遗产。这座堡垒是韩国最重要的历史瑰宝之一，也是该国唯一保存完好的完整城墙堡垒。



- 打卡水原新景点：**水原星空图书馆**，这里拥有四层楼高的天花板，并展示河流和宇宙星球模型的独特设计。



Cheongsapo Daritdol Observatory  
青沙浦桥石展望台

### 第05天 京畿道 - 170KM - 江原道

(酒店早餐/当地午餐/宵夜)



- 动手制作**甜蜜的巧克力**，再亲手调配芳香四溢的**手工香皂**，为你的旅程增添独特的创意与美好回忆！

- 午餐后，前往滑雪场，体验世界级的**滑雪乐**。

(包含租借滑雪服装及滑雪用具，不包含墨镜及手套)



- **宵夜时光**：品味韩式炸鸡及冰爽饮料，体验韩剧主角的宵夜生活！

### 第06天 江原道 - 170KM - 首尔

(酒店早餐/当地晚餐)



- 探索并畅玩世界上最大的室内主题公园 - **乐天世界**！

- 坐在**贵宾席**观赏“无声”现场绘画和尖端媒体艺术的动作彩绘涂鸦秀。

- **东大门市场**：被称为“时尚诞生地”，是闻名全球的时尚购物天堂。

### 第07天 首尔

(酒店早餐/当地午餐/当地晚餐)



- **德寿宫**：首尔五大宫殿之一，它也是韩国电视剧最受欢迎的拍摄地之一。

\* 如参观期间关闭，将替换成景福宫



- **土产与纪念商品店**：人蔘专卖店，连锁美妆店，枳椇子莓果护肝宝专卖店。

- 来到首尔最夯的逛街圣地**明洞购物街**。

### 第08天 首尔 - 60KM - 仁川 ➔ 吉隆坡

(早餐盒)

#### 免责声明：

行程次序以当地旅行社安排为准。行程，膳食，住宿，交通等可能会因不可抗拒因素而更动，恕不另行通知。



Ludensia Park  
卢登西亚主题公园



# Taste Indulge

## 味蕾

We handpick local specialty restaurants instead of traditional group dining venues. Cuisine is more than just a taste; it's an experience of culture. Embrace the local way of life, savor authentic Korean flavors, and discover the essence of Korea in every bite.

我们精选当地特色餐厅，而非传统的团体餐厅。美食不仅是味蕾的享受，更是文化的体验。入乡随俗，品味正宗韩国风味，在每一口之间感受地道的风土人情。



Pork Knuckle  
韩式炖猪蹄套餐



Abalone Ginseng  
Chicken Soup  
鲍鱼人蔘鸡汤



Korean Spicy  
Chicken Stew  
韩式铁锅炖辣鸡汤



Emperor Submarine  
Seafood Pot  
皇帝潜水艇海鲜锅

Days 天数	BREAKFAST 早餐	LUNCH 午餐	DINNER 晚餐	SUPPER 宵夜
1	-	-	机上用餐 Meal On Board	-
2	早餐盒 Breakfast Box	猪肉汤饭 Pork Rice Soup	皇帝潜水艇海鲜锅 Emperor Submarine Seafood Pot	-
3	酒店早餐 Hotel Breakfast	韩式烤炖青花鱼 Korean Style Grilled & Braised Mackerel	韩式马铃薯猪骨汤 Gamjatang	-
4	酒店早餐 Hotel Breakfast	韩牛精品刷刷锅 Hanwoo Premium Shabu-Shabu	韩式铁锅炖辣鸡汤 Korean Spicy Chicken Stew	-
5	酒店早餐 Hotel Breakfast	鱿鱼猪肉烧 Osam Bulgogi	自理 Own Arrangement	韩式炸鸡 Korean Fried Chicken
6	酒店早餐 Hotel Breakfast	自理 Own Arrangement	韩式烤肉 Korean BBQ	-
7	酒店早餐 Hotel Breakfast	鲍鱼人蔘鸡汤 Abalone Ginseng Chicken Soup	韩式炖猪蹄套餐 Pork Knuckle set	-
8	早餐盒 Breakfast Box	-	-	-

Remarks/备注:

All pictures in brochure are for illustration purpose only / 行程上的图片仅供参考





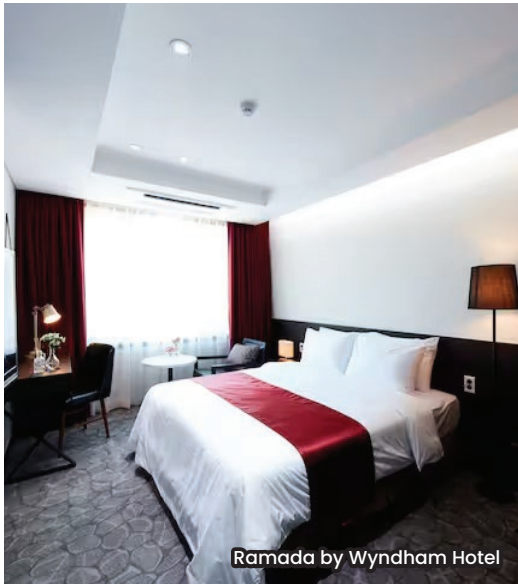
# Accommodation 住宿



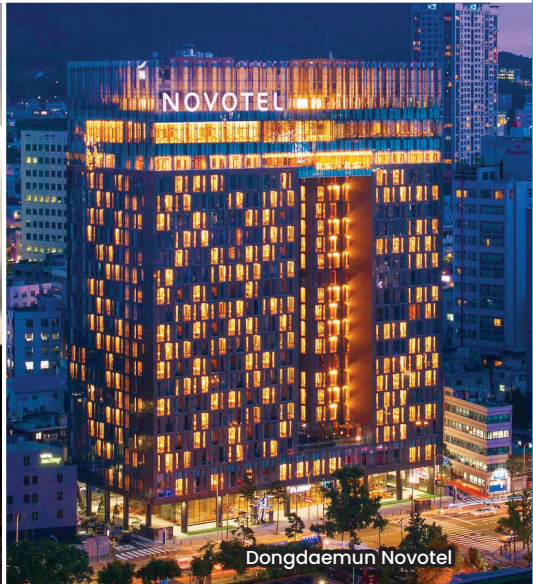
Embark on a complete journey at 4-star & 5-star hotel, offering a quality & comfortable stay.  
全程安排四+五星级酒店, 让您在整个旅程中享受到有质量且舒适的住宿环境。



Busan ASTI Hotel



Ramada by Wyndham Hotel



Dongdaemun Novotel



Yong Pyong Ski Resort

STAY 住宿	LOCATION 地点	HOTEL 酒店	RATED 等级
1 Night	Incheon	Ibis Styles Ambassador Incheon Airport T2 Hotel or similar	★★★★★
2 Nights	Busan	Busan ASTI Hotel or similar	★★★★★
1 Night	Yongin	Ramada by Wyndham Hotel or similar	★★★★★
1 Night	Gangwon-do	Yong Pyong Ski Resort or similar	★★★★★
2 Nights	Seoul	Dongdaemun Novotel or similar	★★★★★

THE SIGNATURE TOURS

Sister Brand of



Travel Partner:



thesignaturetours



The Signature Tours 卓越旅程



The Signature Tours