



16D13N

# ROYAL PRINCESS ALASKA CRUISE + CANADIAN ROCKIES PREMIUM TOUR (2N BANFF)

16天13晚阿拉斯加皇家公主号及加拿大洛基山脉豪华游（2晚班夫）

Tour Code: GPRC-UAC



# Why GD Fly Cruise?

## 为何选择 GD 飞航游轮?



### Diverse Destinations 多样目的地

Cruises offer a variety of routes and destination choices, to explore more places.  
邮轮提供多样航线和目的地，让旅客探索多个目的地。



### Convenience 便捷性

One-time boarding procedures make it easy to leisurely cruise through multiple destinations, eliminating the hassle of frequent accommodation changes.  
只需办理一次登船手续，便轻松畅游多个目的地，免去频繁更换住宿的烦恼。



### Comprehensive Services 全方位服务

Offer comfortable accommodations. Passengers can enjoy resort-like services on the cruise without the need for frequent accommodation changes.  
提供舒适住宿、丰富餐饮、娱乐活动和各种设施，享受度假服务。



### Comfortable Transportation and Various Entertainment 舒适的交通方式

Offer comfortable transportation for passengers to enjoy scenic views and diverse entertainment like performances, concerts, casinos, and water facilities, avoiding the discomfort of long drives or flights.  
免受长时间驾驶或飞行的疲劳，惬意欣赏迷人景色与体验多彩娱乐活动。



### Suitable for All Ages 适合各年龄段

Cruise travel is suitable for passengers of all ages, with diverse facilities and activities catering to the interests and needs of different demographics.  
邮轮旅行适合各年龄段旅客，多样的设施活动满足了不同人群的兴趣和需求。



### Professional Tour Manager 专业旅游经理

Our Experience and Professional Tour manager ensure a hassle free and memorable dream holidays.  
我们经验丰富的专业旅游经理确保您度过一个无忧无虑、且充满回忆的假期。

# TOUR HIGHLIGHTS 行程亮点

## PRINCESS PRINCESS PLUS PACKAGE 公主号PLUS配套

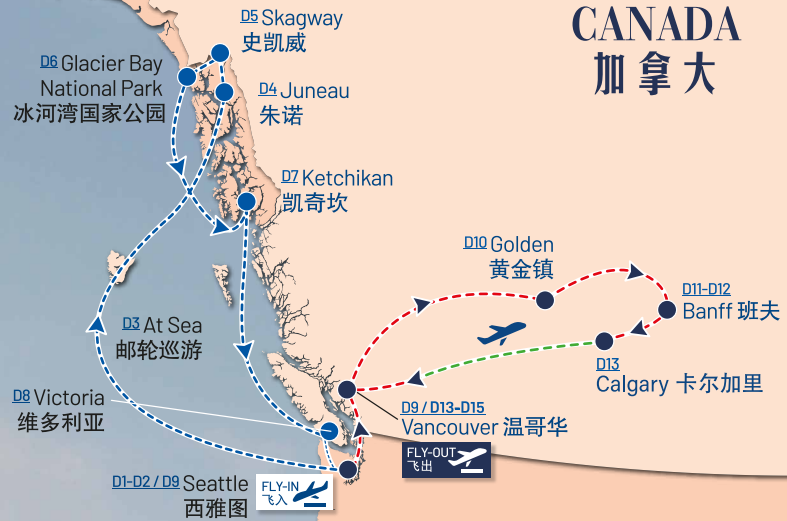
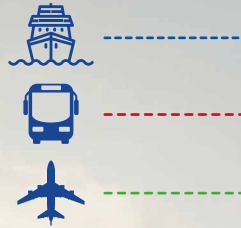
- ✓ WiFi (1 Device per guest) 无线上网 (每位客人一架)
- ✓ Plus Beverage Package (All drinks up to \$15 each) 饮料升级配套 (全部饮料高达 15美元)
- ✓ Unlimited Juice Bar 无限畅饮果汁吧台
- ✓ Premium Desserts (2 per day) 精致甜点 (每天两份)
- ✓ Fitness Class (2 per cruise) 健身课程 (两次/航行)
- ✓ Casual Dining Experience (2 per cruise) 休闲餐厅体验 (两次/航行)
- ✓ Room Service Delivery 舱房送餐服务



# ROYAL PRINCESS® 皇家公主号®

## SHIP INFORMATION 邮轮资料

Passenger Capacity 载客量	: 3,560 pax
Guest Cabin 舱房数量	: 1,780
Length 总长度	: 1,083 ft.
Gross Tonnage 总吨位	: 142,229
Inaugural Cruise 首航年份	: 2013, refurbished on 2018
Number of Decks 层数	: 19 Decks



CANADA  
加拿大

UNITED STATES  
美国



## CRUISE CABIN TYPE



Balcony Stateroom  
阳台舱房

Extraordinary Features That Offer The Perfect Experience At Sea In Every Season!

非凡的功能，在每个季节提供完美的海上体验！



# ITINERARY



Seattle city view



Juneau Port



Totem Park

## DAY 01

MOB

### KUALA LUMPUR → TAIPEI → SEATTLE

Depart for Seattle via Taipei. Upon arrival, meet & greet by local guide and transfer hotel for check-in by private charter coach.

 Hilton Seattle Airport Hotel or similar

## DAY 02

B/Meal On Cruise

### SEATTLE CITY TOUR - CRUISE TERMINAL - BOARDING

**Pike Place Market** - is a public market. Opened on August 17, 1907, and is one of the oldest continuously operated public farmers' markets in the United States.

**Flying Fish Show** - Tradition Way on how to handle the fish after you bought it, bringing entertainment to the market.

**First Starbucks Coffee Shop** - The first Starbucks store, established in 1971 at Pike Place Market.

**Gum Wall** - The Gum Wall is a brick wall covered in used chewing gum under Pike Place Market.

**Seattle Centre / Space Needle** - photo stop in this Iconic tower, 605-ft.-tall spire at the Seattle Center, with an observation deck and restaurant.

Transfer to Pier 91 cruise terminal for embarkation.

 Overnight on cruise

## DAY 03

Meal On Cruise

### CRUISING AT SEA

Feel free to enjoy on cruise facilities.  Overnight on cruise

## DAY 04

Meal On Cruise

### JUNEAU, ALASKA (0100pm-0900pm)

**Juneau**, the capital of Alaska, nestled between stunning glaciers and rugged mountains, offers a wealth of outdoor activities, captivating cultural landmarks, and unique opportunities for wildlife viewing.

 • Juneau Shore Excursions  
• King Crab Tasting

 Overnight on cruise

## DAY 05

Meal On Cruise

### SKAGWAY, ALASKA (0700am-0830pm)

**Skagway**, a historic Alaskan town nestled in breathtaking natural beauty, captivates visitors with its rich Gold Rush heritage and scenic wonders.



• Skagway Shore Excursions

 Overnight on cruise



Glacier Bay National Park

## DAY 06

Meal On Cruise

### GLACIER BAY NATIONAL PARK (SCENIC CRUISING) (0600am-0300pm)

The breathtaking national park and preserve boasts some of the world's most spectacular tidewater glacier, such as Margerie Glacier, which often drops colossal chunks of ice into the sea.

 Overnight on cruise

## DAY 07

Meal On Cruise

### KETCHIKAN, ALASKA (0700am-0100pm)

Ketchikan is a charming city in Alaska, renowned for its rich Native American culture, stunning fjords, and abundant wildlife.



• Skagway Shore Excursions

 Overnight on cruise

## DAY 08

Meal On Cruise

### VICTORIA, CANADA (0900pm-1159pm)

Victoria, a charming city in Canada, is known for its captivating British architecture, beautiful gardens and rich cultural events.

Feel free to do own shore excursions or enjoy facilities on cruise.

 Overnight on cruise



## DAY 09

Meal On Cruise/L/D

### DISEMBARKATION AT SEATTLE (0700am Docked) VANCOUVER

#### VANCOUVER CITY TOUR

**Gastown / Steam Clock** - This is the area's world-famous steam clock. Built in 1977, the clock is one of only a few steam clocks in the world.

**Canada Place/ New Convention Centre (Pass by)** - One of the exhibition hall in 1986 Expo. Now is Cruise Terminal and site of a 5 star hotel.

**Stanley Park** - a magnificent green oasis in the midst of the urban landscape of Vancouver.

**Totem Park** - the colorful Totems represent the culture of Native Indians.

 Hilton Vancouver Airport Hotel or similar

## DAY 10

B/L/D

### VANCOUVER - KAMLOOPS - GOLDEN

**Town of Hope** - located in Frazer River Valley. Rambo's first movie "First Blood" was filmed there in 1981.

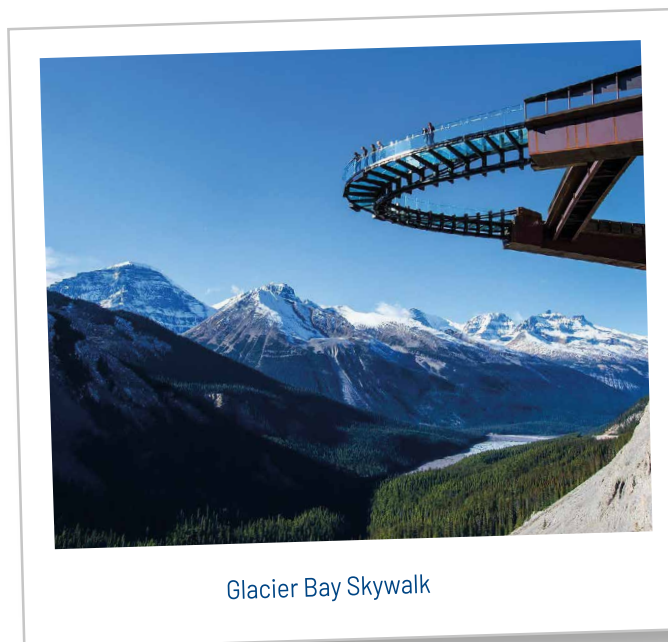
**Ginseng Factory** - located in the Canadian capital of Kamloops, where the factory welcomes customers to visit, learn, and explore the know of Ginseng.

**Last Spike** - a historical landmark for the completion of the Canadian Pacific Railway dated back in 1885 Nov 7th.

**Revelstoke National Park** - Located in the province of British Columbia, Canada, it is renowned for its magnificent natural landscapes and rich wildlife.

**Rogers Pass** - the only way passing through the Columbia Mountains with record snow fall of 70 feet in a winter.

 Prestige Golden Hotel or Similar



Glacier Bay Skywalk

## DAY 11

B/L/D

### GOLDEN - YOHO NATIONAL PARK - BANFF

**Yoho National Park** - one of the five National Park in Canadian Rockies with an area of 1,313 sq.km. Features 28 mountain peaks each above 3,000 meters.

**Emerald Lake** - is one of the Canadian Rockies' finest lakes and a resplendent place to visit in British Columbia.

**Natural Bridge** - is a rock formation that spans a small but powerful waterfall on the Kicking Horse River in Yoho National Park.

**Lake Louise** - the nearby lake, framed by mountains and is one of the most famous mountains vistas in the world.

**Moraine Lake (Open in Season)** - one of the most famous lakes in Canada, it's a glacier-fed lake and the view of the ten peak mountains surround the lake.

**Bow Falls** - the 1954 film "River of No Return", starring Marilyn Monroe, a Hollywood star who was popular all over the world.

**Banff Sulphur Mt. Gondola** - where to see the majestic Rocky Mountains 360 degrees.

 **Hotel Canoe & Suite or Similar**

Banff National Park



Columbia Ice Field

## DAY 12

B/L/D

### BANFF- COLUMBIA ICEFIELD - BANFF

**Icefield Parkway** - listed as one of the most scenic roads in the world.

**Crowfoot Glacier** - The Icefields Parkway in Alberta, Canada, is named for its resemblance to a crow's foot.

**Bow Lake** - sits at an elevation of 1,920 meters and spends most of the year locked away in ice.

**Peyto Lake (Open in Season)** - One of the most famous lakes in Banff National Park.

#### Columbia Icefield Centre

**Ice Explorer Ride** - take a ride on Ice Explorer drive down on top Athabasca Glacier.

**Glacier Sky Walk** - a thrilling experience walking across the Glass-Floor bridge overlooking Sunwapta Valley 918 feet underneath your feet.

 **Hotel Canoe & Suites or similar**



Natural Bridge

## DAY 13

B/L/D

### BANFF - CALGARY → VANCOUVER

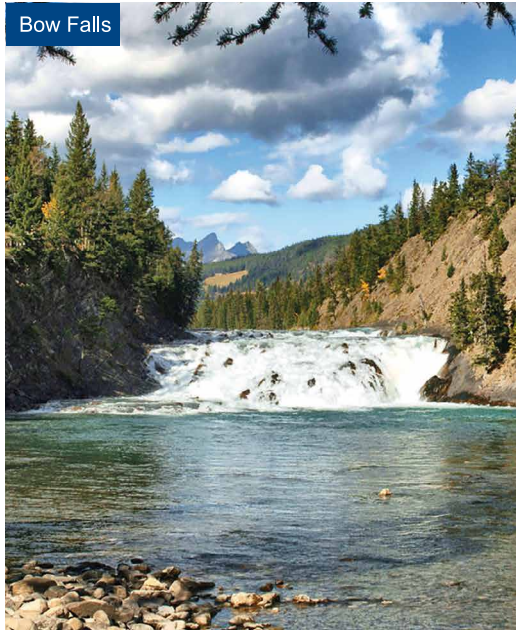
**Calgary** - Oil Capital of Canada.

After lunch, transfer to Calgary airport and fly back to Vancouver.

**Robson Street & Pacific Centre** - located in downtown, it is a renowned shopping and entertainment thoroughfare.

 **Hyatt Regency Vancouver Downtown Hotel or Similar**





Banff Sulphur Mt. Gondola

## DAY 14

B/L/D

### WINE TASTING – McArthur GLEN PREMIUM OUTLET – AIRPORT

Free and easy until check out.

After lunch, visit **Lulu Island Winery** for Ice-wine tasting. Then, transfer to **McArthur Glen Premium Outlet** for shopping. After enjoying a **Live King Crab Seafood Dinner**, proceed to **Vancouver International Airport** for check-in and fly back home sweet home.

## DAY 15

MOB

### VANCOUVER → TAIPEI

## DAY 16

MOB

### TAIPEI → KUALA LUMPUR

Disclaimer: Due to some travel restrictions, local / religious festivals, public holidays, weather condition, transport technical issue, acts of nature, Golden Destinations reserved the rights to alter the sequence or change, amend or alter the itinerary, if necessary, with or without prior notice.

**Remark:** There will be no refund or replacement if the tour logistic affected by the above issue. All pictures are for illustration purpose only. Itinerary for all ground tours are subject to final confirmation.



Crowfoot Glacier

# 行程表



西雅图城市游

## 第1天

机上用餐

### 吉隆坡 → 台北 → 西雅图

出发前往西雅图。抵达后，由当地导游迎接并转移到酒店办理入住手续。

🏨 西雅图机场希尔顿会议中心酒店或同等标准

## 第2天

早/邮轮用餐

### 西雅图城市游 - 邮轮码头 - 登船 🚢

**派克市场**，于1907年8月17日开放，是美国历史最悠久且持续经营的公共农贸市场之一。

**飞鱼表演** - 买鱼后用传统方式处理鱼，形成一种特殊的娱乐及表演方式。

**世界第一家星巴克** - 于1971年建与西雅图派克市场的首家星巴克咖啡店。

**口香糖墙** - 位于美国西雅图市派克市场内，墙上沾满了百万块嚼过的口香糖。

**西雅图中心/太空针** - 这座标志性塔楼的照片停靠点位于西雅图中心605英尺高的尖顶，设有观景台和餐厅。

前往邮轮码头进行开始登船手续。

🚢 皇家公主号

## 第3天

邮轮用餐

### 海上巡航

可享用邮轮上的设施。🚢 皇家公主号

## 第4天

邮轮用餐

### 朱诺，阿拉斯加州 (0100pm-0900pm)

**朱诺** - 仅以黄金和政府而闻名，还以其令人叹为观止的美丽冰川和壮丽的水景和山景而闻名。



- 朱诺岸上观光游
- 帝王蟹品尝

🚢 皇家公主号

## 阿拉斯加冰川湾



史凯威

## 第5天

邮轮用餐

### 史凯威，阿拉斯加州 (0700am-0830pm)

**Skagway**，一个历史悠久的阿拉斯加小镇，坐落在令人叹为观止的自然美景中，以其丰富的淘金热遗产和迷人的景观吸引着游客。



• 史凯威岸上观光游

🚢 皇家公主号

## 第6天

邮轮用餐

### 冰川湾国家公园 (风景巡航)(0600am-0300pm)

这个令人叹为观止的国家公园和保护区拥有世界上一些最壮观的潮水冰川，比如玛格丽冰川，它经常将巨大的冰块抛入大海中。

🚢 皇家公主号



维多利亚，加拿大



玛格丽冰川

## 第7天

邮轮用餐

### 凯奇坎，阿拉斯加州 (0700am-0100pm)

凯奇坎，是阿拉斯加的一个迷人城市，以其丰富的美洲原住民文化、壮丽的峡湾和丰富的野生动物而闻名。



• 凯奇坎岸上观光游

皇家公主号

## 第8天

邮轮用餐

### 维多利亚，加拿大 (0900pm-1159pm)

维多利亚，加拿大一个迷人的城市，以其迷人的英式建筑、美丽的花园和丰富的文化活动而闻名。

可以自行选择岸上观光游，或者享用邮轮上的设施。

皇家公主号

## 第9天

邮轮用餐/午/晚

### 西雅图邮轮码头下船 - 温哥华

邮轮于早上7.00靠岸。

#### 温哥华市区游

**煤气镇** - 该地区举世闻名的蒸汽钟。该时钟建于1977年，是世界上为数不多的蒸汽钟之一。

**加拿大广场/新会议中心(经过)** - 1986年世博会展馆之一。现在是邮轮码头和五星级酒店的所在地。

**史丹利公园** - 是温哥华城市景观中的一片壮丽绿洲。

**图腾公园** - 彩色的图腾代表了土著印第安人的文化。

希尔顿温哥华机场酒店或同等标准

## 第10天

早/午/晚

### 温哥华 - 坎卢普斯 - 黄金镇

**希望镇** - 位于弗雷泽河谷，蓝波1981年第一部电影《第一滴血》的拍摄地。

**人参厂** - 位于加拿大的首府坎卢普斯市，这家工厂欢迎客人前来参观、学习和探索人参的知识。

**最后一根钉** - 一个历史地标，标志着加拿大太平洋铁路于1885年11月7日完工。

**雷夫斯托克国家公园** - 位于加拿大不列颠哥伦比亚省，以其壮丽的自然景观和丰富的野生动植物而著称。

**罗杰斯通道信息中心** - 穿越哥伦比亚山脉的唯一道路，冬季的降雪记录高达70英尺。

普里斯提格金色旅馆或同等标准

## 第11天

早/午/晚

### 黄金镇 - 优鹤国家公园 - 班夫

**优鹤国家公园** - 加拿大落基山脉五大国家公园之一，面积为1,313平方公里。公园内有28座海拔超过3,000米的山峰。

**翡翠湖** - 是加拿大落基山脉最美丽的湖泊之一，也是不列颠哥伦比亚省一个灿烂的旅游胜地。

**天然桥** - 是尤霍国家公园内基金霍斯河上一处横跨的小而强劲的瀑布。

**露易丝湖** - 附近的湖泊被群山环抱，是世界上最著名的山景之一。

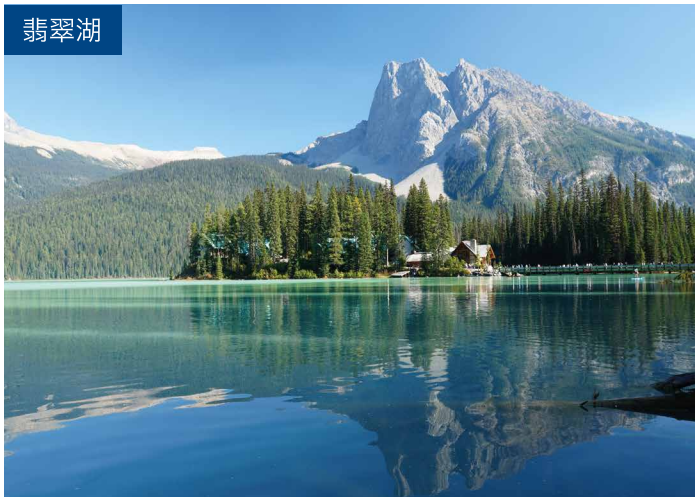
**冰碛湖 (季节性开放)** - 加拿大最著名的湖泊之一，拥有十峰环绕湖景的冰川湖。

**弓河瀑布** - 1954年由好莱坞明星，马利莲梦露主演的电影‘大江东去’的拍摄场地。

**班芙山峰** - 在这里可以 360 度观赏雄伟的落基山脉。

 **班夫Canoe & Suite酒店或同等标准**

翡翠湖



## 第12天

早/午/晚

### 班夫 - 哥伦比亚冰原 - 班夫

**冰原公路** - 被列为世界上最具景观的公路之一。

**乌鸦足冰川** - 位于加拿大阿尔伯塔省的冰原公路因其形状像乌鸦的脚趾而得名。

**弓湖** - 海拔1,920米，大部分时间被冰雪覆盖。

**佩托湖 (季节性开放)**-班夫国家公园最著名的湖泊之一，它是一个绿松石蓝色的冰川湖。

**冰原中心(哥伦比亚冰原)**

**冰川探险** - 乘坐冰川探险者车辆驶过阿萨巴斯卡冰川顶部。

**天空步道** - 一次激动人心的体验，走在悬浮在你脚下918英尺高空的玻璃地板桥上，俯瞰桑瓦普塔山谷。

 **班夫Canoe & Suite酒店或同等标准**

温哥华



哥伦比亚冰原跨天漫步

## 第13天

早/午/晚

### 班夫 → 卡尔加里 - 温哥华

**卡尔加里** - 加拿大石油之都翡翠湖。

午餐后，前往卡尔加里机场，然后飞回温哥华。

**洛逊街 & 太平洋中心** - 位于加拿大温哥华市中心，是一条著名的购物和娱乐街道。

 **温哥华凯悦酒店或同等标准**

## 第14天

早/午/晚

### 冰酒品尝 - 温哥华奥特莱斯 - 温哥华机场

自由活动直到退房。

午餐后，前往**鹭岛酒庄**品尝冰酒。

然后，前往**温哥华奥特莱斯**购物中心。

享用完**活帝王蟹海鲜**晚餐后，前往温哥华国际机场办理登机手续，然后飞回温馨的家。



幽鹤国家公园



煤气镇

## 第15天

机上用餐

温哥华机场登机 → 台北

## 第16天

机上用餐

台北 → 吉隆坡

**免责声明：**由于旅行限制、当地/宗教节日、公共假期、天气状况、交通情况、自然灾害等因素，必要时黄金旅程保留对行程进行适当调整(调整景点游览顺序)以确保行程顺利进行，会或事先通知。

**备注：**如果旅游行程受到以上问题影响，将不提供退款或更换。所有图片仅供参考。所有旅游行程以最终确认为准。

GENERAL INFORMATION

ALASKA / USA / CANADA



<p>EXCHANGE RATE/ CURRENCY 货币/汇率</p> 	<p>Canada 加拿大 United States 美国 Cruise 邮轮</p> <p>Canadian Dollar (CAD) 加币 United States Dollar (USD) 美金 United States Dollar (USD) 美金</p>
<p>TELEPHONE CODE 拨号代码</p> 	<p>Canada 加拿大 United States 美国</p> <p>00+1 250+ Local Number 当地号码 00+1 360+ Local Number 当地号码</p>
<p>TIME ZONE 时差</p> 	<p>Canada 加拿大 United States 美国</p> <p>15 hour behind of Malaysia 标准时差慢马来西亚15小时 16 hour behind of Malaysia 标准时差慢马来西亚16小时</p>
<p>WEATHER 气候</p> 	<p>Alaska 阿拉斯加 18°C - 3°C (May - Sep)    Banff 班夫 18°C - 3°C (May - Sep) Seattle 西雅图 26°C - 8°C (May - Sep)    Jasper 贾斯珀 26°C - 8°C (May - Sep) Vancouver 温哥华 23°C - 8°C (May - Sep)</p>
<p>FLIGHT 航空</p>	

YOUR TRAVEL AGENT



Visit our website at [www.goldendestinations.com](http://www.goldendestinations.com)